

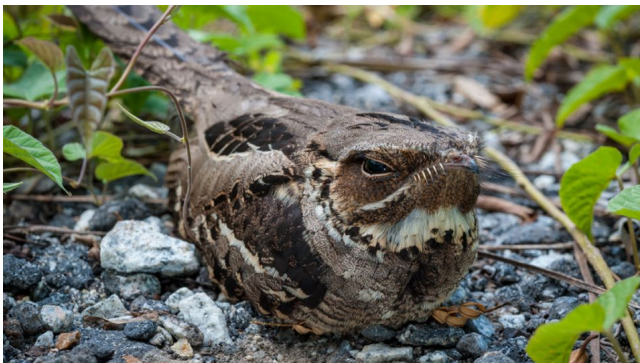
SPRING QUIZ - QUESTIONS

ANIMALS

1. Puffins return to British shores from warmer climes during April and May to have their young. What is a baby puffin called?
 - Puffchick
 - Puffling
 - Puffinette
2. Bumblebees will start to emerge from hibernation during spring, sometimes as early as February. On average, how large are bumblebee colonies?
 - 20.000 workers
 - 1000 workers
 - 400



3. What kind of spawn can you see in this image?
 - Frogspawn
 - Toatspawn
4. Male rabbits will mark their territory during the spring using their scent. Where do rabbits have some of their scent glands?
 - Feet
 - Belly
 - Chin



5. This friendly creature is a nightjar which 'churrs', throwing the sound like a ventriloquist! How quickly do they 'churr'?
- 1900 notes per minute
 - 600
 - 5



6. If you're lucky, you might catch sight of the UK's most common bat, the pipistrelle, on warm spring evenings. How much does the common pipistrelle bat weigh?
- 400 grams (the same as a tin of beans)
 - 50 grams (the same as two fun-size cereal boxes)
 - 5 grams (the same as a 20p piece)
7. The little owl becomes more vocal in the spring to attract a mate. What does its call sound like?
- Twit-twoo
 - Meow-meow
 - Woof-woof
8. Ewes can recognise up to 50 different sheep faces, but how long do they remember them for?
- A month
 - Two years
 - A week

Spring, Springs and Springs!

1. True or false: You can only balance an egg on its end during each equinox.
2. True or false: The word "equinox" derives from the term "equal day."
3. True or false: Hot Springs National Park is the smallest national park in the country.

4. True or false: Spring is the shortest of the four seasons.
5. When was the first coiled spring manufactured?
- a. 2nd century BCE
 - b. AD 7th century
 - c. AD 15th century
 - d. AD 19th century
6. On the first day of Spring, the Sun appears _____
- a. to reach its highest altitude of the year.
 - b. to descend to its lowest altitude of the year.
 - c. to cross the Celestial Equator.
 - d. largest, as it is closest to Earth on this date.
7. Who coined the term "Hope springs eternal..."
- a. William Shakespeare
 - b. Alexander Pope
 - c. Jane Austen
 - d. St. Thomas Aquinas
8. Let's say you jump off a 125 foot-high roof on a spring. Each time you bounce, you rise to a height equal to $\frac{2}{5}$ the height of your previous bounce. How high do you rise after your third bounce? (Yes, assume you rise to $\frac{2}{5}$ of 125 feet after your first bounce.)
- a. 47.5 feet
 - b. 20 feet
 - c. 16 feet
 - d. 8 feet
9. On the first day of spring, where on Earth would one see the Sun passing directly overhead?

- a. at the equator
- b. at the Tropic of Capricorn
- c. at the Tropic of Cancer
- d. at the Arctic Circle

10. Which of the following statement(s) is/are true about the spring tide?

- a. It only occurs during the full moon
- b. It occurs during the full and new moon
- c. It is higher than the neap tide
- d. It happens every 18.6 years